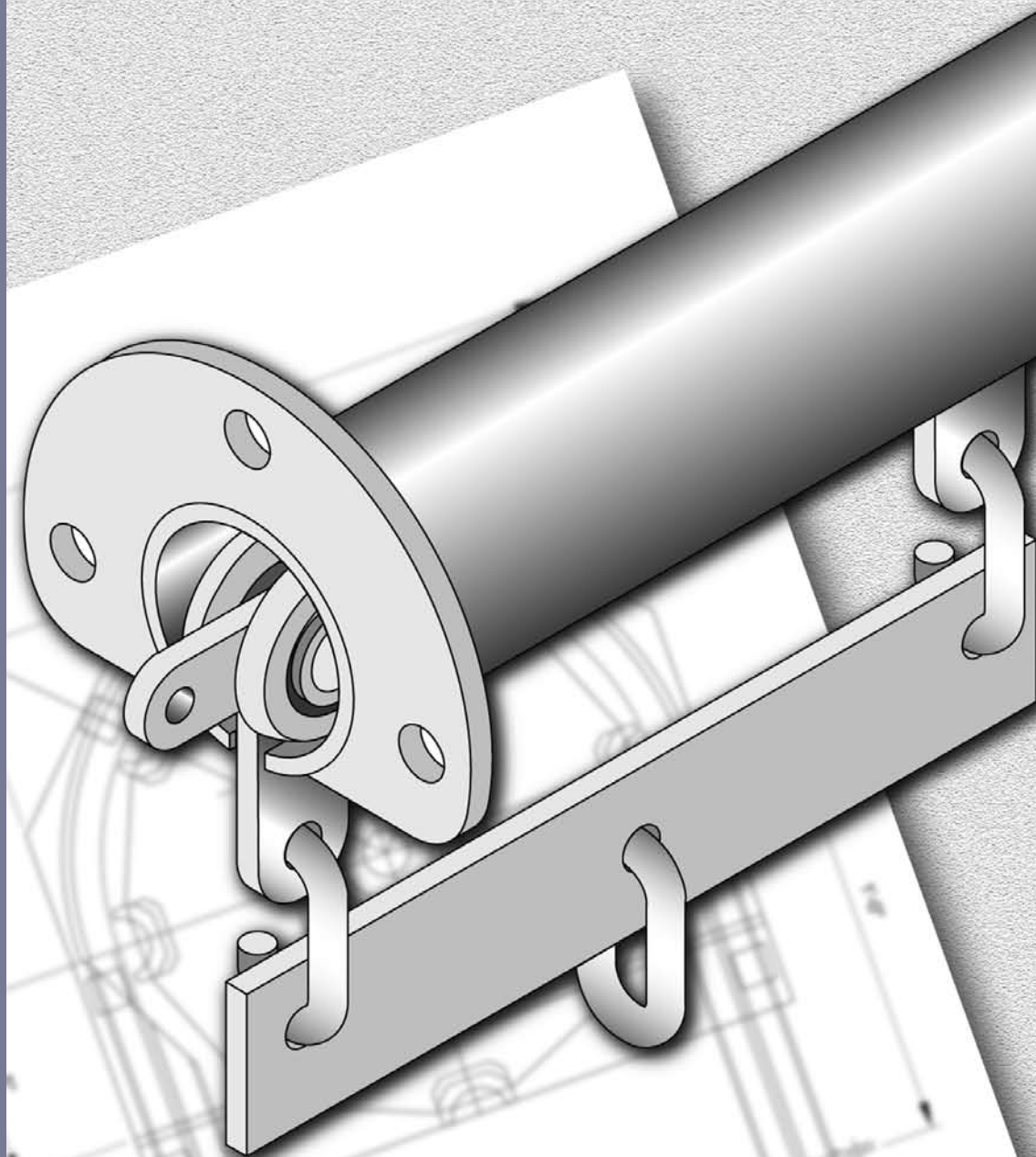


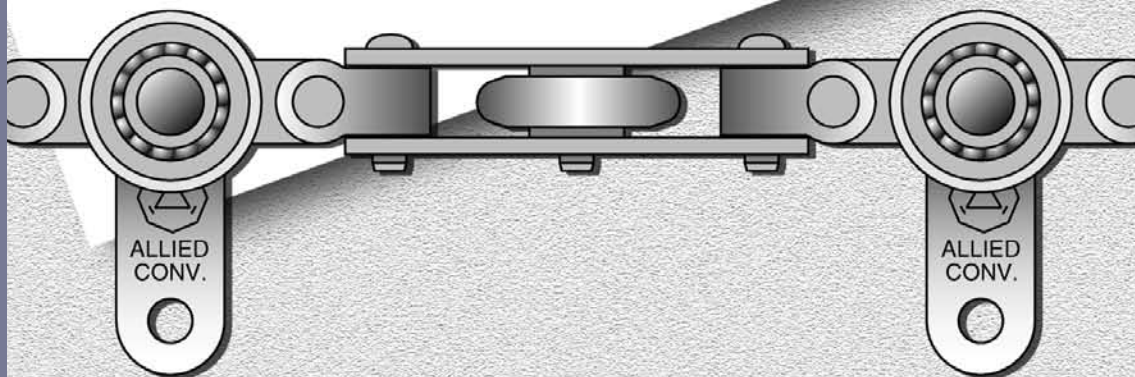


**Allied
Conveyors
Limited
Manufacturing
Engineers**



ALL-FLEX[®]

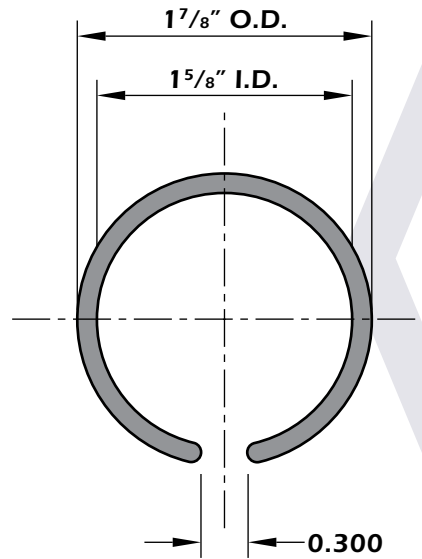
MONOVEYORS



ENCLOSED TRACK:

The track is a rolled tubular section of SAE 1035 high carbon manganese steel, stocked in 10'-0" & 20'-0" lengths.

Available in #316 Stainless Steel on special order.

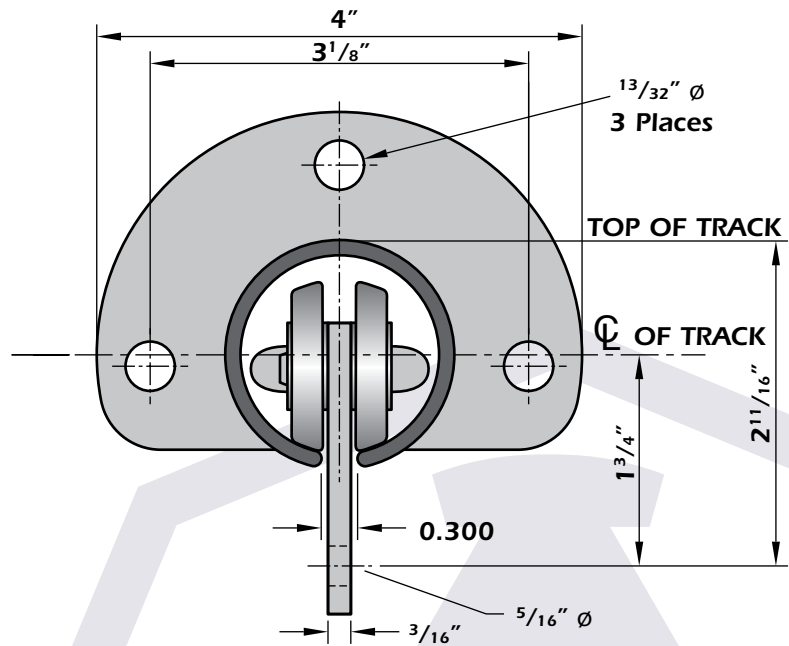


AF 60104
STRAIGHT TRACK SECTION
 Weight: 2.20 lbs per ft.

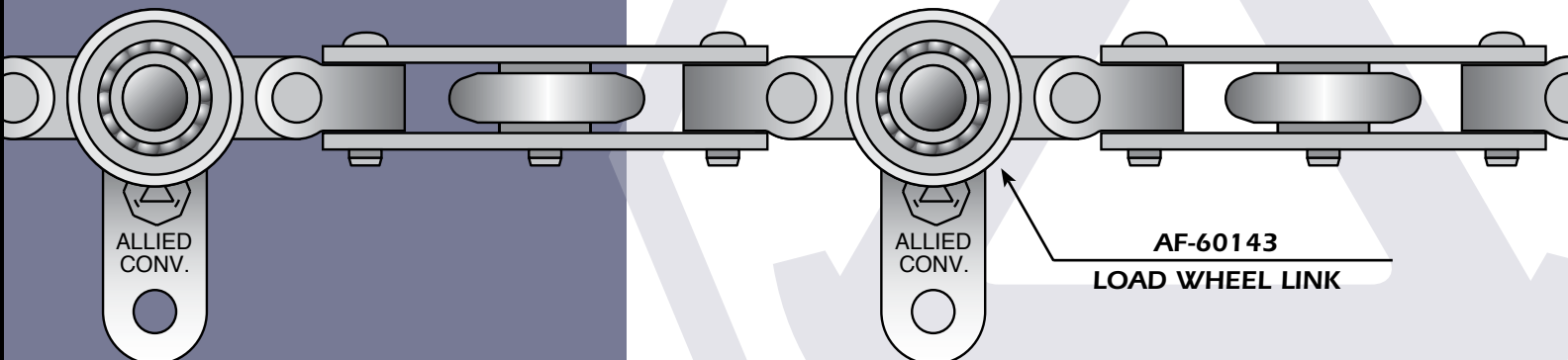
CHAIN PULL:

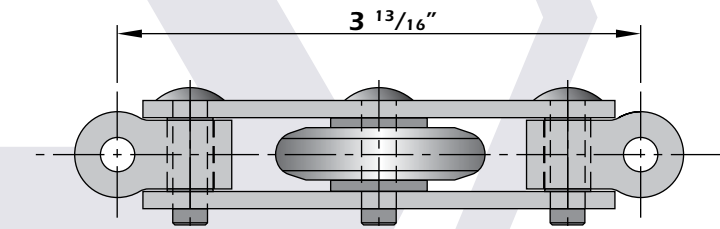
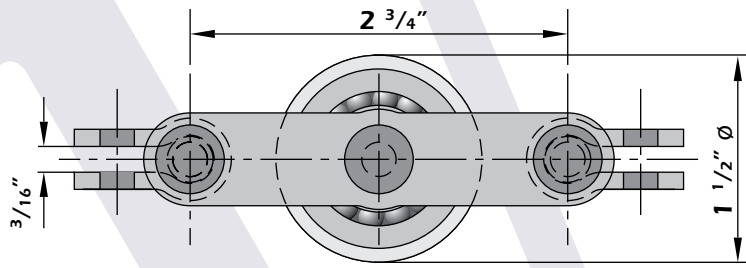
The maximum recommended chain pull should be limited to 600 pounds using a single drive unit, providing a safety factor of 8.25:1 to obtain maximum chain life.

Ultimate tensile strength is 4,950 pounds.

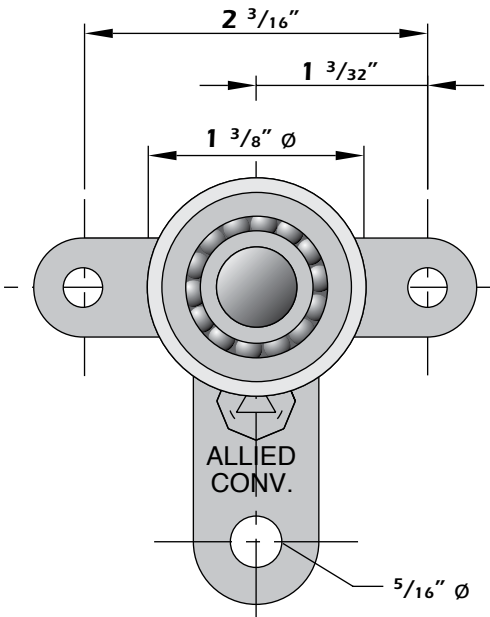
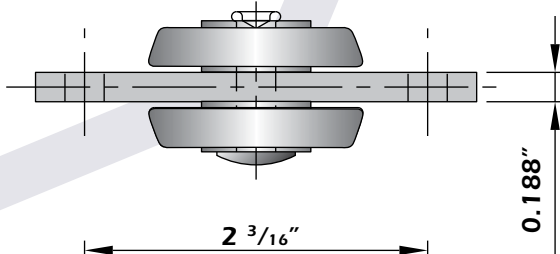


TRACK CROSS SECTION
C/W END PLATE





**AF-60142
CHAIN GUIDE WHEEL LINK**



**AF 60143
CHAIN LOAD WHEEL LINK**

GUIDE WHEEL LINK

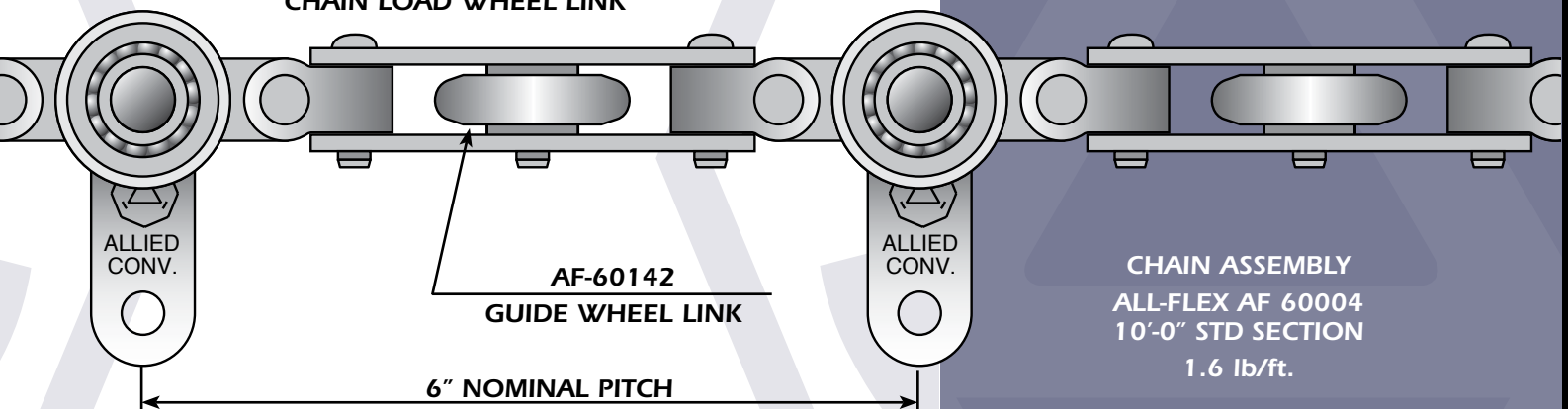
1-1/2" diameter machined steel wheel heat treated to Rockwell 58 - 62 on the "C" scale C/W 14 Grade 500 balls .187" dia. riveted to double chain side bars of C-1045 high carbon steel hardened to Rockwell 37 - 41 "C" scale.

LOAD LINK:

Load Link to consist of two 1-3/8" dia. wheels heat treated to Rockwell 58 - 62 on the "C" scale. Each wheel C/W 14 Grade 500 balls .187" dia. riveted to a single chain link .188" thick C-1045 high carbon steel hardened to Rockwell 37 - 41 "C" scale.

CHAIN ASSEMBLY:

6" Nominal Pitch
50 lb. Loading Per Trolley
Weight 1.6 lb/ft.



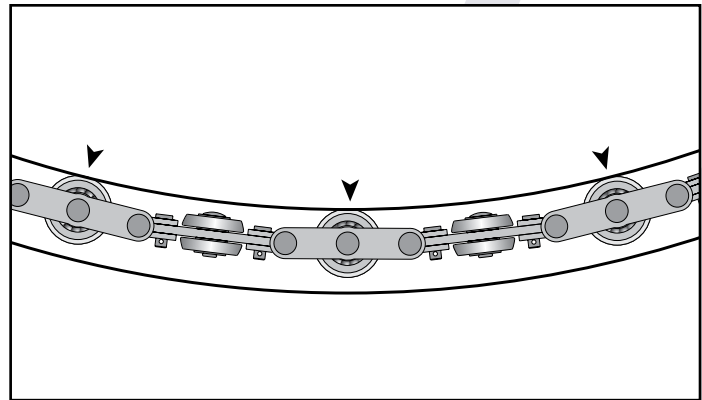
**CHAIN ASSEMBLY
ALL-FLEX AF 60004
10'-0" STD SECTION
1.6 lb/ft.**

HORIZONTAL TRACK TURNS:

Horizontal curves are available with radii of 12" & 24".

Available in other radii on special order.

*Note: All horizontal & vertical curves are heat treated to Rockwell 35 to 40 "C" scale for long life.

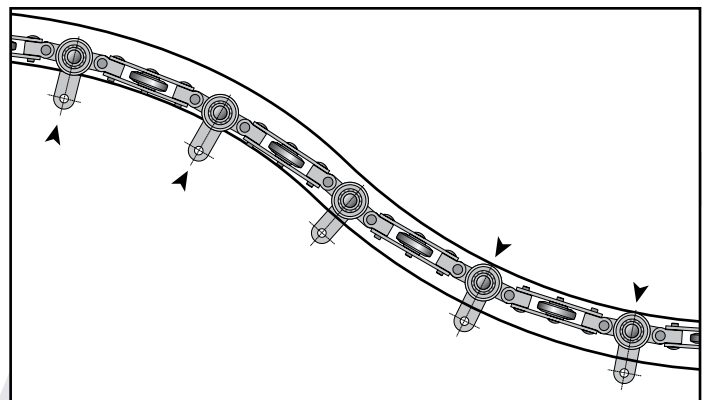


HORIZONTAL TURNS

Horizontal turn with the top removed illustrates how the chain passes around the curve. The lateral wheels ride on the side of the track, which guides the chain smoothly around a horizontal turn without the use of special guides, traction wheels or roller turns.

Vertical curves are available with radii of 18" and 24"

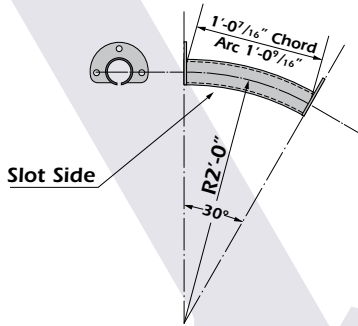
Available in other radii on special order.



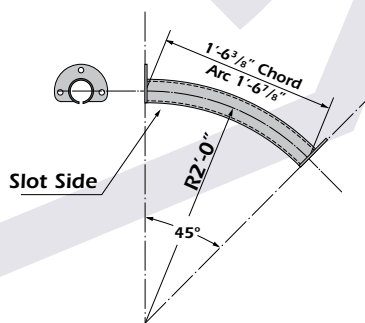
VERTICAL CURVES

Compound vertical curve with one side removed illustrates how the chain passes around the curve. The vertical chain wheels contact the top of the lower curve and the bottom of the upper curve.

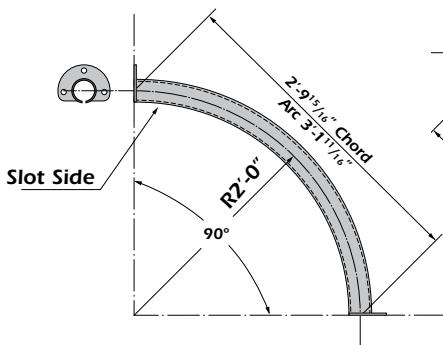
UPPER VERTICAL CURVES



AF-60122 UPPER VERTICAL CURVE 2'-0" RAD. X 30°

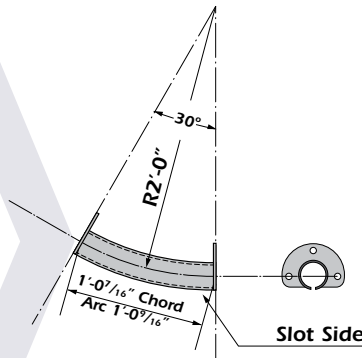


AF-60123 UPPER VERTICAL CURVE 2'-0" RAD. X 45°

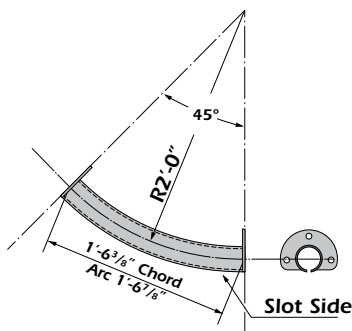


AF-60124 UPPER VERTICAL CURVE 2'-0" RAD. X 90°

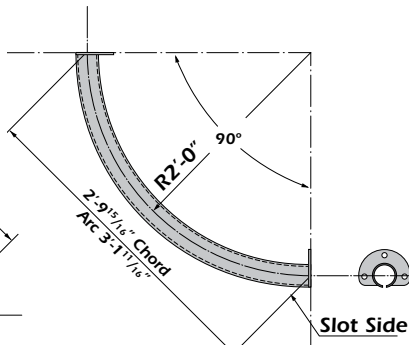
LOWER VERTICAL CURVES



AF-60127 LOWER VERTICAL CURVE 2'-0" RAD. X 30°

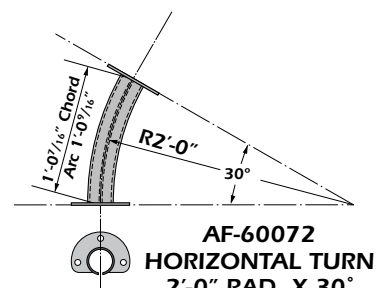


AF-60128 LOWER VERTICAL CURVE 2'-0" RAD. X 45°

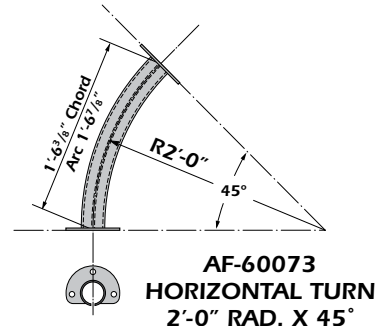


AF-60129 LOWER VERTICAL CURVE 2'-0" RAD. X 90°

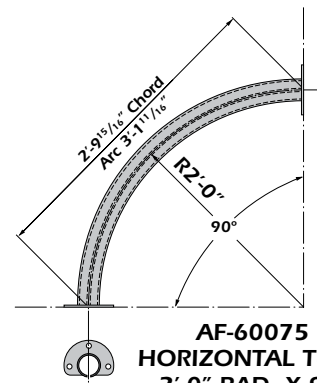
HORIZONTAL TURNS



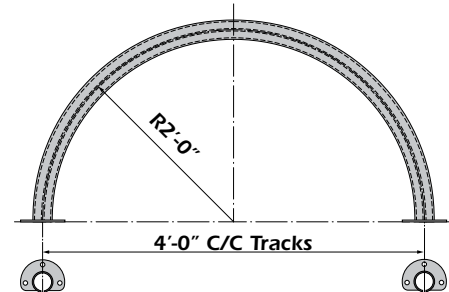
AF-60072 HORIZONTAL TURN 2'-0" RAD. X 30°



AF-60073 HORIZONTAL TURN 2'-0" RAD. X 45°



AF-60075 HORIZONTAL TURN 2'-0" RAD. X 90°

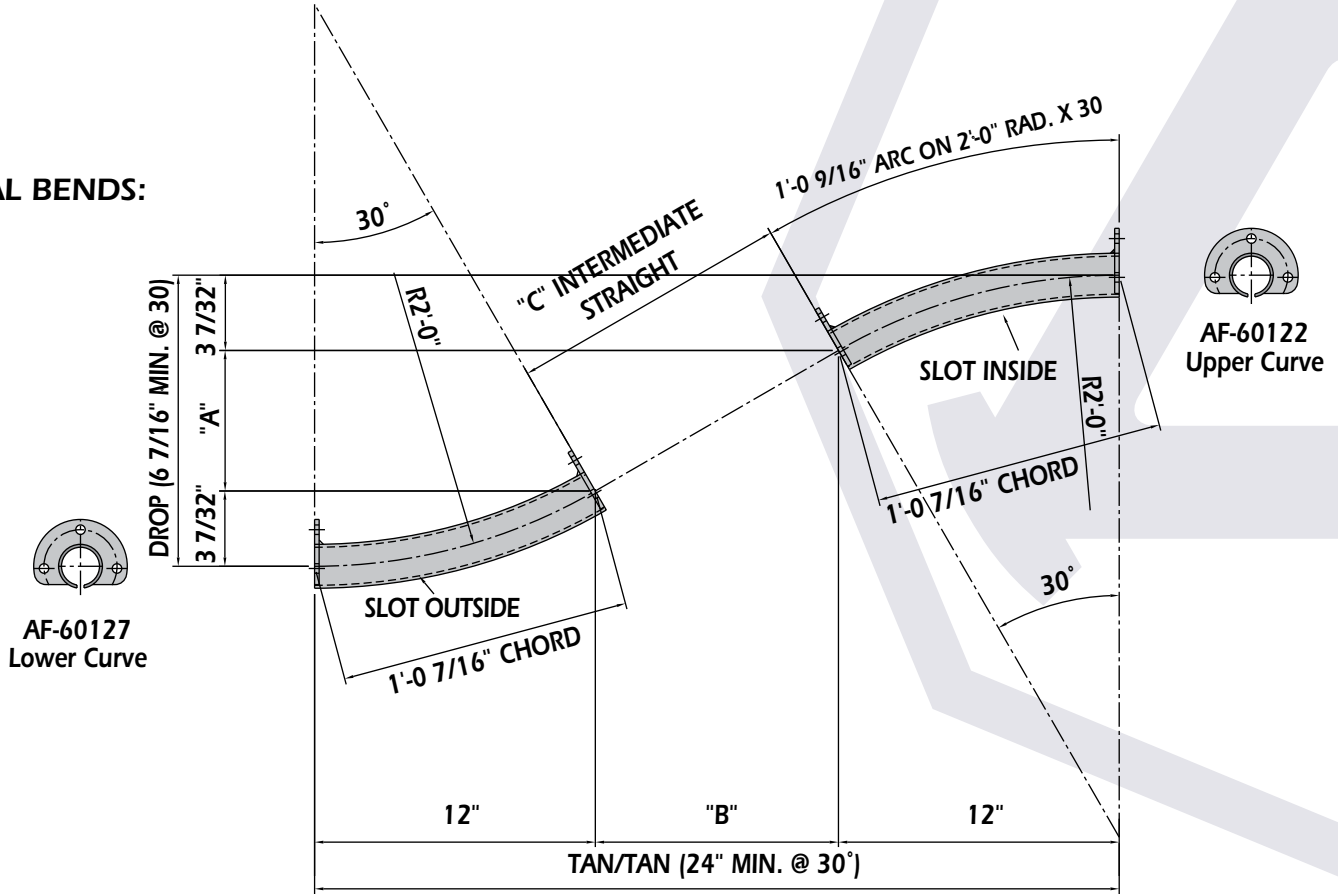


AF-60076 HORIZONTAL TURN 2'-0" RAD. X 180°

Horizontal and vertical curves as illustrated above, are carried in stock. However, special radius or degree curves can be fabricated on order. See reference vertical bend drawings on page 9.

NOTE: All horizontal and vertical turns are heat treated on the contact surface to Rockwell 35-40 on the "C" Scale.

VERTICAL BENDS:

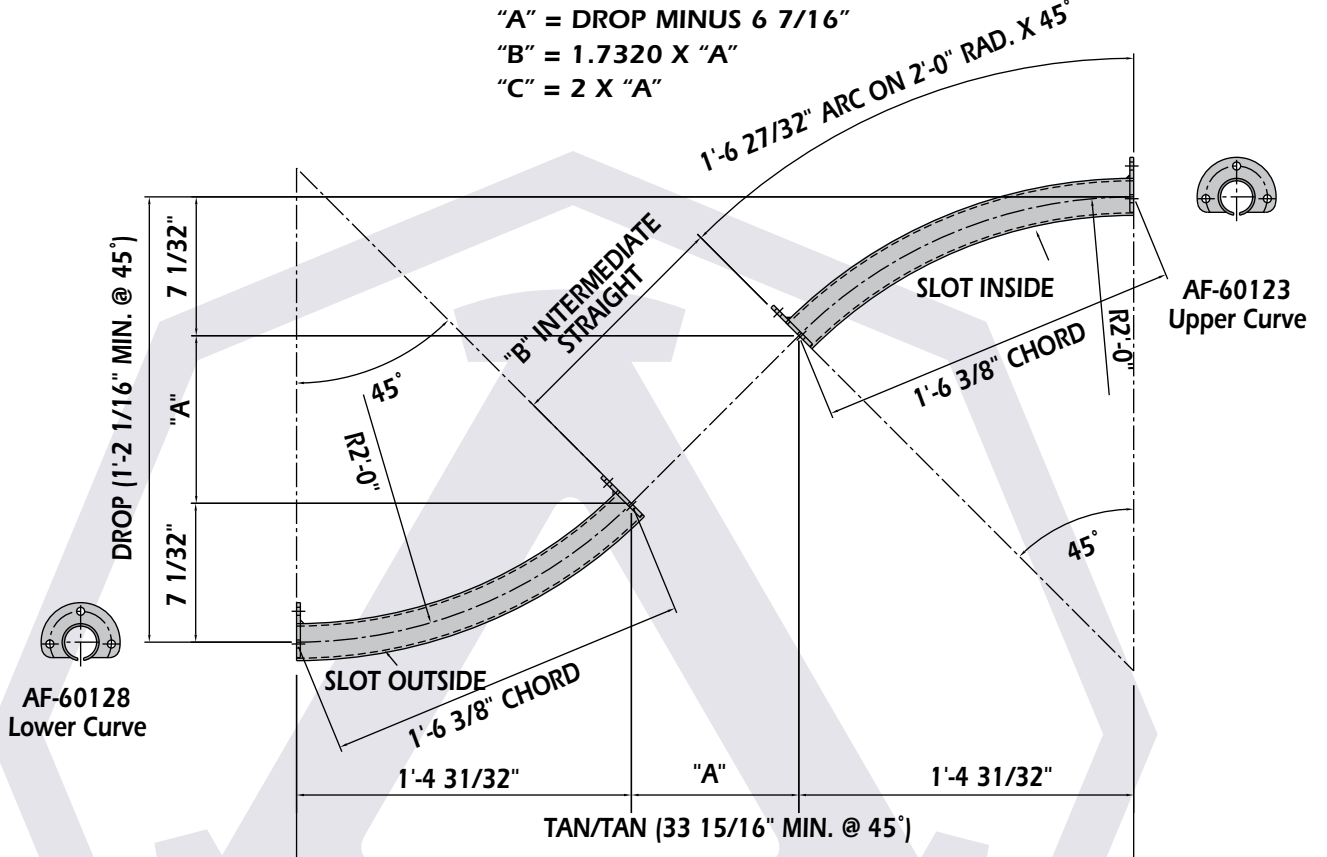


2'-0" RAD. X 30° VERTICAL BEND

"A" = DROP MINUS $6 \frac{7}{16}$ "

"B" = $1.7320 \times "A"$

"C" = $2 \times "A"$



2'-0" RAD. X 45° VERTICAL BEND

"A" = DROP MINUS $1'-2 \frac{1}{16}$ "

"B" = $1.414 \times "A"$

**Other Products designed, fabricated
and installed by Allied:**

- 1 1/2", 2", 3", 4" & 6" Pitch Overhead Monoveyors
- 6" & 8" Pitch Enclosed Track Monoveyors
- Power & Free Overhead Monoveyors
- Floor Line Drag Conveyors
- Flat-Top Pallet Conveyors
- Slat Conveyors
- Belt Conveyors
- Hinged Apron Conveyors
- Live Roller (Chain or Belt Driven) Conveyors
- Wire Mesh Conveyors
- Spindle Type Conveyors
- Free Monorail Systems c/w Box or Tongue Switches

Allied Conveyors also has Hydraulic Bending
and Structural Steel Rolling Facilities.

All-Flex is a registered trademark of Allied Conveyors.



ALLIED CONVEYORS LTD.

902 Dillingham Road, Pickering, Ontario, Canada L1W 1Z6

Tel.: (905) 839-5196 Fax: (905) 839-5150

E-mail: sales@alliedconveyors.com

Web Site: www.alliedconveyors.com

IN U.S.A.

Data given in this publication is intended only to aid the engineer in preliminary evaluations and is subject to change without notice.